

ASBURY UPDATE

GRADUATION EDITION

JUNE 2023

A photograph of four black graduation caps being thrown into the air against a bright blue sky with wispy white clouds. Three hands are visible at the bottom, reaching up towards the caps. The caps are in various stages of being tossed, with some showing the tassel.

Volume 35 - Number 6

June Birthdays

1	Liz Sprague	10	Allie Barnes Caleb Deffley	23	Bubba Hughes Cole Via
2	Jan Durham Amy Povie	11	Lora Gunsallus Adel Karam Carol Walls	24	Jane Stout
3	Catherine Gilbert Colin Harrison Betty Perry	13	Carol Anderson Virginia Brown Joseph Edwards Susan Smith	25	Barbara Beam Debbie Eason
4	DJ Armstrong Polly Cooper Gail Lange	15	Amanda Arnsdorff	26	Spencer Luke
5	Kathy Hodges Vic King	16	Ruth Foster Susan Harrison	27	Carson Burkett Callie Downing
8	Anne Hagan Lila West	18	Wendy Ciccodicola Phil Pinault Claire Reeve	28	Barbara Gooby Collis West Cory West
9	Erin Dalton Charles Ennis Chuck Long Tom Nease	19	Scott McCoy Robert Smith	29	Sandy Hoecherl Joan Lee Nicholas Lindsay
		20	Joe Richards	30	Gordon Baker Russ Kirks Everest McCaffity



June Anniversaries

2nd

Phil & Suzanne Devlin

3rd

Jack & Carolyn Lewis

6th

Ross & Natalie Munro

9th

Colin & Jackie Stewart

9th

Callie Downing & Ken Hardigan

10th

Doug & Amy Povie

11th

Tim & Mary Ann Barnes

11th

Carole & Ross Warfield

12th

Alexis & Emily Gage

12th

Lauren Dutko & Richard Kay

14th

Murph & Kathryn Murph

21st

Jan & Richard Wright

22nd

Sam & Barbara Ruggere

26th

Don & Gloria Stahle

27th

Billy & Cheri Hester

28th

Steve & Rhonda Reed

29th

Vic King & Amanda Arnsdorff

30th

Lora Gunsallus & Kelly McDaniel



ASBURY ANGELLS



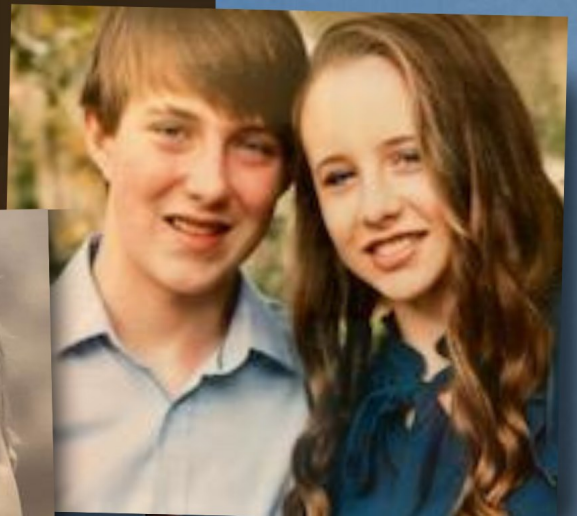
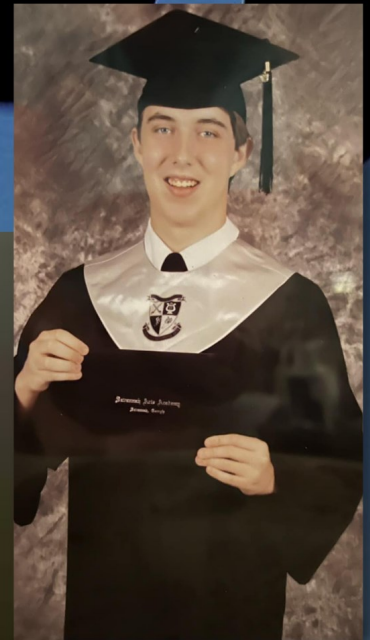
2023 GRADUATES



Ashelyn Carden



Samuel Povie

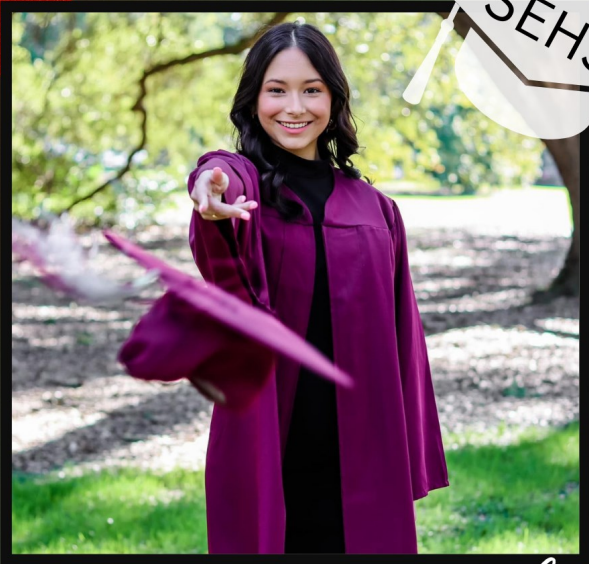
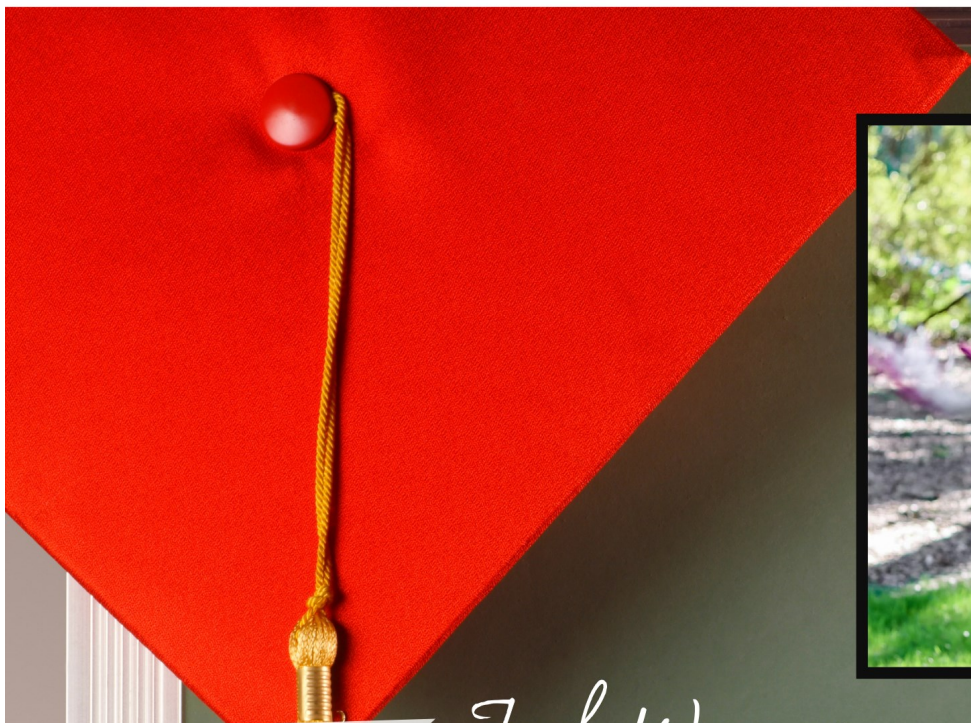


Natalie Tisinger



Henry White





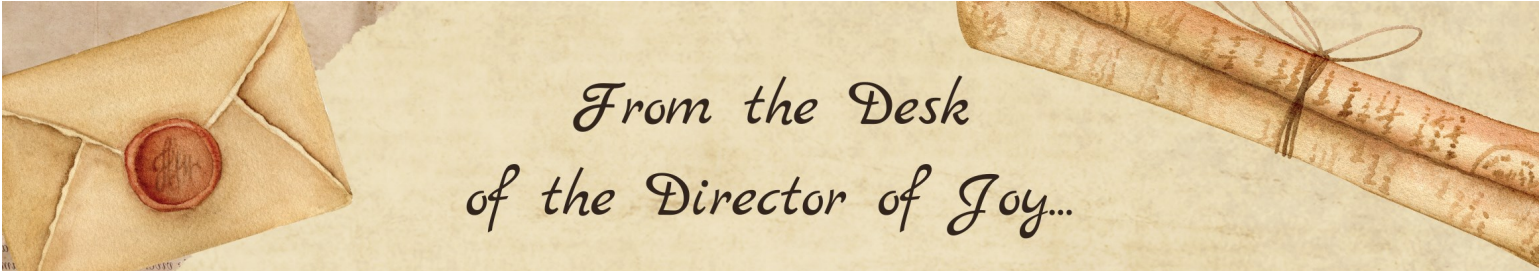
Jack Wagner

Layla Bosche



Rider Foyner





From the Desk of the Director of Joy...

Where Do I Fit In?

Like many people, I can't help comparing myself to others, asking, "Where do I fit in?" With that question in mind, I researched some numbers that show how people gave to Asbury in 2022. Lynne and I can see from this chart how our giving compares to how other families gave. You might like to see where you fit in, too. So now you, too, can now see how your giving compares to that of other folks in our community. How do you feel about where you fit in? And what does the chart tell you about yourself, or others?

Household's Giving (Total yearly gift to the church)	Number of households giving regularly	Total amount given from these households	This category's percentage of total giving	Percentage of these givers to all givers
\$8,400.00 or more per year (\$700/month or more)	13	\$211,936.00	33.1%	5.2%
\$4,800 to 8,399 per year (\$400 - 699 per month)	23	\$147,360.00	23%	9.2%
\$2,400 to 4,799 per year (\$200 to 399 per month)	42	\$140,208.00	21.9%	16.7%
\$ 1,200 to 2,399 per year (\$100 to 199 per month)	53	\$85,983.00	13.4%	21.1%
\$ 600 to 1,199 per year (\$50 to 99 per month)	44	\$37,713.00	5.9%	17.5%
\$360 to 599 per year (\$30 to 49 per month)	24	\$10,555.00	1.6%	9.6%
\$120 to 359 per year (\$10 to 29 per month)	24	\$5,488.00	0.9%	9.6%
Something, but less than \$120 per year	28	\$1,444	0.2%	11.2%
TOTALS	251	\$640,686	100%	100%

Here are some things that I take away from the chart.

+ First, I think the most important number in the chart is "251," that's the total number of households (families) who gave something to the church in 2022, making Asbury's ministries possible. I speak for our stewardship committee in saying a hearty "THANK YOU" to each and every family that gave something to the church last year. Every gift matters. Thanks to ALL of you.

+ Second, I'm very encouraged by the 13 households that gave \$700 or more per month to our church. Those families gave almost one-third of all the gifts given in 2022. I'm not in this group, but I note that your generosity inspires all of us to give sacrificially.

+ Third, I'm happy to note that so many people give \$1,200 a year (\$100 per month) or more. I think it speaks well for our church to have those 131 households give more than 90% of the church's support in 2022. (There are 416 member or constituent households that were, or had been, connected to the church last year.)

+ Fourth, I note that in most years the church receives many financial gifts that are truly anonymous, many of them in cash given in the weekly offerings received during worship. Thanks to all who give your support anonymously.

+ Fifth, I'm aware that our church's projected budget for 2023 is \$736,000. As of April 3, we had received pledges totaling \$507,561. If you haven't pledged, or haven't yet given, please prayerfully consider doing so. Yearly giving usually exceeds pledging, but pledges do help our leaders sleep more easily! Our church's financial health depends on all of us doing our fair share.

Finally, one last "thank you" to all of you for your prayers, your presence in worship, your financial gifts, and your many hours of service in many ways. Asbury, like every church, is sustained by us all for the good of us all, and for the good of our neighbors. Our church makes a difference in our lives and in the lives of our Savannah family and friends. Your giving matters.

~ Rev. Richard Allen
Stewardship Committee member

Saturday, July 1st from 10:30 am- Noon
at Wesley Oak Church in Thunderbolt.

"SPIRITUALLY SPEAKING" CLASS

"Scripturally Speaking" is a short class to help you read and sound more natural when you are reading in front of the congregation on Sunday mornings and, really, anytime you get up to speak in front of a group of people!

Facilitators J.J. Collins and Cheri Hester will show you simple techniques that, with practice, will help your speaking and reading voice sound more natural, interesting and engaging. The goal of the class is to get more people comfortable with their presentation skills and, by doing so, bring more readers to the podium on Sunday services at Wesley Oak and Asbury Memorial Churches.



SENIOR FITNESS CLASSES

SAGE BRIGADE

The Salvation Army has started the "Sage Brigade" a senior program of many activities. Top of the list is Sr. Fitness, using light weights and cardio for a 45-minute fitness class that incorporates music from the 50's, 60's, 70's up to the present. The format is a warmup w/o weights, followed by weights and cardio, and finishes off with a cool down. Great for everyone from beginners to advance. Weights are provided. No floor work. \$25 for the entire year. The fee includes other fun activities like crochet, line dancing, and much more. Registration is at the door when you come for your first class. Start anytime.

Senior Fitness Classes
(no age requirement to attend classes)

Led by Asbury Member, Linda Socks

The Salvation Army - 3000 Bee Road, Savannah

Extra parking available directly across the street
at Daffin Park.

Mondays & Wednesdays @ 11:45 am.
Some holidays excluded.



STEPHEN MINISTRY UPDATE

Each of us has times when we are lonely, grieving, hurt, or in need of care. In his second letter to the Corinthians, Paul writes that when we suffer and are troubled, we find comfort through Christ (2 Corinthians 1:4–6)—and one of the ways we find this comfort is through other caring Christians.

Our congregation has a group of people skilled in caring for those facing challenges in their lives. These people, called Stephen Ministers, have undergone extensive training to develop and nurture their caring skills. Now our Stephen Ministers are working with people who are experiencing many different kinds of crises.

Our second class of Stephen Ministers complete training and will be commissioned in late June, and will begin their caring ministry in our congregation and community.

Who might receive care from a Stephen Minister? Care receivers may be hospitalized, grieving the death of a loved one, separated or divorcing, homebound, unemployed, adjusting to the birth of a child, or experiencing many other kinds of life difficulties. They may be members of our church, or friends, neighbors, and co-workers without any church home.

Think about your life and the lives of the people around you. Are you, or is someone you know, going through a time of crisis or challenge? The care of a Stephen Minister may be exactly what's needed to help bring Christ's healing.

If you have questions about Stephen Ministry, feel free to call Candace Jenkins at the church office 912-233-4351. Consider whether you know of someone who needs their care, and offer to connect them to this ministry. And remember our Stephen Ministry in your prayers.

Our Stephen Leader Team - Candace Jenkins, Rev. Claire Marich, Rhonda Reed, Stephen Reed and Sandra Katz



MEN FRIENDS

Asbury Memorial and Wesley Oak Men's Group

WOW!

Wisdom book study
with Men Friends

Men Friends is the Asbury Memorial and Wesley Oak Men's Group that meets on Thursday nights via Zoom. Join us as we read 'Wow! Wisdom: Stories from the Path of Life' written by our own Rev. Billy Hester.

The book is fun, easy to read, and each chapter ends with discussion questions. We have yet to make our way through them all - who knew men could be so talkative?!

We begin each meeting with a time of voluntary sharing about what's happening in your life, or whatever you care to share before we begin our discussion of the week's chapter questions.

There is a wonderful mix of deeply serious discussion and a lot of laughter as well. There is no commitment to attend, or requirement that you have been here from the beginning. Drop in and give us a try. It's a great way to connect and make new friends, all from the comfort of your home.

Should you have any questions, contact Gregg Walther at gdw0517@gmail.com.

We meet each Thursday 7:00p - 8:30p.
Zoom meeting ID: 844 3633 5506, passcode: Asbury.



GODLY PLAY



EVERY SUNDAY
AT ASBURY MEMORIAL & WESLEY OAK

FOR ALL KIDS AGES 3 YRS THROUGH 5TH GRADE

SMART RECOVERY FOR INDIVIDUALS

Do you want to address an addiction problem or harmful habit? With our practical tools based on cognitive and motivational psychology and addiction research, SMART Recovery helps you make and sustain positive changes that lead to a balanced life.

Through our meetings, tools, and strategies, SMART can help you stop harmful habits and behaviors, including addiction to alcohol and other drugs, or negative behaviors related to relationships, sex, spending, gambling, eating and exercise disorders, and self-injury.

SMART Recovery is unique. Our science-based approach emphasizes self-reliance, self-resilience, and self-empowerment. With SMART, you are the expert on your recovery. You choose how to personalize your plan for successful change. There's no requirement to commit to a lifetime of SMART Recovery meetings. You decide when and if the time is right to move on.

SMART and Other Recovery Groups

SMART Recovery believes that people find their own paths to successful recovery. For some, that path may include 12-step programs or other support groups. Although SMART's approach differs from those of other organizations, it does not exclude them. We recognize and support the fact that many individuals benefit from participating in more than one support community.

Get Started

Ready to get started? SMART Recovery hosts online and face-to-face meetings around the world. Our online message board is an excellent forum to learn about SMART and get 24/7 support.

Learn More

Visit www.smartrecovery.org to search for local meetings and to join our online community.



LOCAL MEETING INFORMATION

Mondays 7:00-8:30pm

**Wesley Oak Church
3124 E. Victory Drive
Savannah, GA 31404**

All are welcome!

LOCAL CONTACT

Ruthie Duran Deffley

ruthie@healthymindga.com

CONFIRM MEETING DETAILS*

<http://www.smartrecovery.org/meetings>

***Meeting times, days, and locations are subject to change. Please confirm meeting details prior to attending.**

Study Groups & Fellowship Groups

Asbury Memorial offers a wide variety of study and fellowship groups. We are excited about the rich and varied opportunities for adult study and fellowship, some via Zoom. We hope that you will join in one or more of the programs.

Wisdom Seekers

(on break for Summer)

Facilitator: Margaret Clay
Mondays, 1:30pm—3:00pm

If you have any questions about the group or the book, please email Margaret Clay at margaretclay@comcast.net.
Zoom Meeting ID: 864 8291 0310, Passcode: Asbury

Men Friends

Men's Group for Asbury Memorial and Wesley Oak
Facilitator: Gregg Walther
Thursdays, 7:00pm—8:30pm

The Thursday night Men's Group welcome all men to join us for an evening of discussion and fellowship. We talk about topics suggested by our members, recently 'Christian nationalism' and the state of the Christian Church in general has sparked much discussion. What's on your mind? Should you have any questions please contact Gregg Walther at gdw0517@gmail.com. The Men's Group meets Thursdays from 7:00-8:30 via Zoom and welcomes all men. If you're looking for a way to connect, make new friends and participate in some fascinating discussions, all from the comfort of home, give us a try. We have a great time, come join us!
Zoom meeting ID: 844 3633 5506, passcode: Asbury.

A Course in Miracles

Facilitator: Rev. Marilyn Leigh
Thursdays, 4:00 to 5:30 pm

The Course in Miracles study group is dedicated to the study and practical application of A Course in Miracles to our daily lives. Our group allows the Course to guide us in becoming and expressing the Love that is the truth about us. It teaches the true meaning of forgiveness and challenges us to put God first in our lives.
If you are interested, contact Rev. Marilyn Leigh at revleigh@yahoo.com.

Pride Families Group



Pride Families Group is a social group for parents or caregivers and their LGBTQIA+ children ages 13 and younger. The group meets the third Saturday of each month to provide a safe, affirming place for fellowship, and for the kids to meet and connect over games and stories.

Check the Programs & Services calendar for program information or contact: Angelic by email uniquelymyself@hotmail.com

Third Saturday of Each Month From
2:00 - 4:00 p.m.



PFLAG SAVANNAH

4TH TUESDAY OF
EVERY MONTH
5:30PM - 8PM

FIRST CITY PRIDE CENTER
1515 BULL STREET SAVANNAH, GA



PFLAG of Savannah Georgia is a locally based volunteer organization that was created to fill a need for support within the coastal empire, and the low country. PFLAG is all about kids, parents/family, and allies. We are here to educate, advocate and support those with LGBTQ+ children in our community.

PFLAG of Savannah Georgia sprang forth from volunteers at our local LGBTQ+ center First City Pride Center. We saw a lot of parents coming in and saying that their children had come out to them and they wanted to be supportive but didn't know how. Carla Faith Moore and Donna Vargas volunteers at the center took this as both a good sign and a challenge and ran with it. Beginning in May with an initial meeting to organize and ending in our official first meeting in September lots of work by many dedicated volunteers created this great group.

Our mission at PFLAG of Savannah is to provide support for families and allies of the youth in Savannah, coastal Georgia and the low country. We provide monthly support group meetings the 4th Tuesday of every month from 5:30- 8pm at First City Pride Center located at 1515 Bull Street, Savannah Georgia.

Email pflagsavannaga@gmail.com or look us up on Facebook PFLAG Savannah GA | Facebook



When Shadows Fall

The members of Asbury Memorial
and Wesley Oak
extend our love and sympathy to:

Elizabeth Newkirk and David & Pat Alley
in the death of Elizabeth's husband, Terry Gibney

Penny Brewer in the death of her wife, Amy Newsome

Wisdom Seekers Group in the loss of Judith Leaptrot



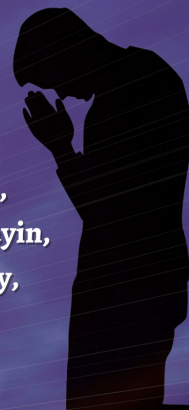
Prayer Requests

Asburians

**DiAnne Amerson, Gordon Baker, Ross Bolton, Fay Carroll, Sheri Coffey, Karen Conrow,
Gretchen Dodd, Callie Downing, Helen Downing, Sam Durham, Chuck Eyler, Katie Farmer,
Bob Francischetti, Ellie Gonye, Gerry Harman, Chase Harrison, Cheri Hester, Jimmie Hilton,
Sandy Hoecherl, John Honerlein, Pat Hunter, Abby Jenkins, Amy Jenkins, Sally Jilek, Dale Karacostas,
Bonnie & Zoey Kaar, Judith Kessler, Jennifer Knox, Rev. Marilyn Leigh, Jack Lewis, Marion Manigo,
Brenda Mills, Virginia Moryadas, James Mullins, Marie Parker, Jo Poston, Mary Prokop, Frank Ramsey,
Tim Steinhauer, Cabell Stewart, Pat Stewart, Beverly Vasta, Henry White, Judy Wilburn,
Diane Williamson, Peggy Zeigler**

Family Members and Friends

**Ann Austin, Max Clements, Collie Collins, Linda Cowart, Travis Dodd, Sara Driggers,
Maddox Faunce, Anne Gooby, Heather Hand, Priscilla Hearn, Sue Hendricks, Brad Hughes,
Barry Jenkins, Robbie Lemmons & Family, Sue Leonard, Anna Lewis, Maggie Loven, Kathy Mayin,
Catherine "Kim" McGowan, Matt Moll, Pat Munoz, Tony Munoz, Fredia Peggs, Bonnie Ridley,
Paula Rushing, Kenneth Sajwan, Linda Southerland, Rosemary Starling, Neola Waller,
William (Bill) Wilhelm, Pelvia Wood, Chuck Woods**



Memorials

A gift has been given to the
Properties Fund
in memory of Peggy Hedeman
by
Tina Austing

A gift has been given to the
Properties Fund
in memory of Bo Crowder
by
Bill & Ann Anderson

A gift has been given to the
Altar Guild Fund
in memory of George Lindsay
by
Bette Hunter

A gift has been given to the
Elevator Fund
in memory of Joan Byrd
by
Cynthia Herold

A gift has been given to the
Hospitality Committee Fund
in memory of Joan Byrd
by
Bette Hunter

Gifts have been given to the Properties Fund in memory of Joan Byrd by:

Bob & Mickie Townsend
Preston & Kathy Hodges
Janet Dixon
Liliana Ciccodicola & Joseph Firestone
Carol Chambers
Marty Coolidge

Nancy Cvetan
Janet Wagner
Robert & Linda Bargerone
Brenda Mills
Bill & Ann Anderson
Wilbur & Patricia Shealy

Martha Horgan
Susan Harrison
Frances Richardson
Robbie Oxnard Bent
Debra Ray & Kimmi Sampieri
Anne & Jim Green



General Budget As of April 2023

YTD Budgeted GOAL	\$254,769
Actual Year-To-Date Expenses	\$226,517
Actual Year-To-Date Contributions	\$234,098
Ahead/Behind	\$7,584

Average Worship Attendance 322
(in person 174, online 147)



Chair Name Plate

As we worship on Sundays, how meaningful it is to see the name of a loved one etched into a nameplate on one of our beautiful sanctuary chairs. If you would like to remember or honor a loved one in a special way, complete an order form and turn it into the church office. Forms are available in the church narthex and the office. Please turn in a completed form to the office.

The cost is \$250.00. The funds are used for the upkeep and maintenance of the sanctuary.

Elizabeth Lariscy
A Southern Lady
By R. Ward Lariscy

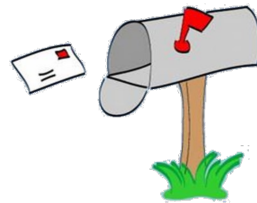
In Loving Memory
of
Dix Elliott



Have you missed that beautiful opportunity to place your contribution in the offering plate on Sunday mornings? Well, have we got options for you! We have multiple ways for you to continue your support of Asbury Memorial and have listed them below. Thank you for your gifts!

Mail:

Mail your contribution by check to:
Asbury Memorial Church
1008 East Henry Street
Savannah, GA 31401



Website:

Log on to our website: www.AsburyMemorial.org

Click on



Complete the form as directed.
You can set it up to be a recurring donation!

Text Giving:

From your mobile phone:
Send your contribution amount to **912-307-3206**
Donate anytime, anywhere
Use easy debit/credit card registration
Make a one-time gift or set it up to be recurring



Church Office:

Call the church office at 912.233.4351

**Both our Finance Chair and Stewardship Chair would also want to remind you,
"It is NEVER too late to make and pay a pledge!"**



Give Now





WESLEY OAK LEAF

June 2023

JUNE IS Busting Out All Over

A good time to start singing that wonderful song from CAROUSEL the musical by RODGERS & HAMMERSTEIN! June is Busting Out of All Over is full of the fragrance of springtime, gardens growing, folks outdoors, and always lots of ministry opportunities popping up all over!

VACATION BIBLE SCHOOL starts at Asbury Memorial on June 4th and all are welcomed to be a part of this event. HERO HOTLINE "Called Together to Serve God" is the theme this year.

New Colors around the sanctuary at Wesley Oak! The filming of Clean Slate series is finishing up and the spaces are getting painted and cleaned up at the church. It has been quite an experience to be part of an exciting endeavor and to have our corner in Thunderbolt lit up with "lights, camera, action." Thank you to PC Collins for graciously assisting the series crews in their needs around the church campus. We have been blessed by the new friendships, the financial support, and all the fun changes like the church name for a short time, "Mountain of Hope!" Not a bad, right!

We look forward to some wonderful times of worship and fellowship during the month of June, and mission opportunities. Such a joy to see the garden bright with plants and flowers, and grateful for all who are involved in the garden ministry. Be sure to come by and enjoy some time in the garden – a great place for reading and meditation.

Wesley Oak is "busting out all over" with the various groups on our campus. Two other worshipping communities, food and resource services, healthy living meetings, local musicians in rehearsal or in recital. "There's a spirit in the air...praise the love that Christ revealed..living, working, in our world." Yes, June is busting out all over at Wesley Oak...with love and life!

Come to the table....the garden table

All are welcome!

That's right! The table(s) in the Joy Cottage Garden!

Above the ground Garden Tables to house flowers and vegetables this spring!



We are looking forward to preparing the tables, (assembling and staining), preparing the soil, planting flowers and vegetables, and all the fellowship one can enjoy around the garden tables. The tables are to be set up in the Joy Cottage Garden for easy access and plenty of sunshine! There will also be a place for folks to sit and enjoy the quiet of beauty of the garden as the season goes on.

Our Angell Youth Group is planning to share in the preparing, planting, and harvesting of a table or two. Perhaps you and some family and/or friends would like to be a part of the garden table ministry, adopt a table. If you would like to have more information on the Garden Tables, or to sign up for one, please contact Reverend Drake, lynnadrake@gmail.com.

What Gifts Can We Bring.....

time – talents – gifts – service

The new year brings to mind new beginnings and new opportunities for us to live out the good news of Jesus in the world. There are already many ways already before us in the various ministries of the church – we should all be considering these in our calling! There are many things as well in our community that are calling for those to serve children, youth, food programs, mentoring, senior citizens, on and on.

WE GIVE THANKS for the time and talents, gifts and service by so many each week to provide worship, to administer church gifts and services, to provide hospitality, care for those who are sick, who are grieving, who need support/encouragement.

WE GIVE THANKS for the many acts of love in word and in deed, in time, talents, gifts, and service we see and the many we do not see going on.

**WHAT GIFTS CAN WE BRING...BE STILL & KNOW
FOR YOU WILL FIND YOUR WAY...GOD IS WITH YOU...**

IN OUR PRAYERS

Rejoice always, pray constantly... 1 Thessalonians

Prayer request cards are found on the back of the pews. Place in the offering plate!

Family of Joan Hester Byrd, Bill Wilhelm, Komoscar family, Jack Donkar, Mary Wynn, Lloye Wynn, Jane Rollins, Charlie Coursey, Collie Collins, PC's Dad, Mary Ann and Walter Parker, Bubba Hughes, Fitz Kincade, People of Ukraine, Pat Howe, Cheryl Hessel, Dan Kerrick, Unspoken need for healing Gloria Moses, McCarthy family, neighbors of Carolyn Ingram, Sydja Trice, Michael McDaniel, George and Barba Irvin, Eddie Aenchbacher, Fran and Arlene Moore, Jimuel Gray and family, Andrew Brown, Magaly O'Donnell, Zoe Simpson, Martha Aenchbacher, Julius and Mary Cooley, UMC Worldwide,

Vickie Hudson address for mail: C/O Southern Manor Retirement Inn,



COME JOIN US IN THE WESLEY OAK CHANCEL CHOIR!

We meet on Sunday mornings at 8:30 a.m. to learn the song for the 9:30 a.m. service. We would love to have you and your voice added to our numbers!

There is no pressure or obligation. It is okay if you can't read music, or if you have never sung in a choir before. There is a place in this choir for everyone to make a joyful noise before the Lord!

**Asbury Memorial
Church**

**1008 East Henry Street
Savannah, GA 31401-7128**

INT.ID 206896

Office 233-4351 Fax 233-5026

www.asburymemorial.org

Return Service Requested

**Non Profit Organization
U.S. Postage Paid
Permit #133
Savannah, GA**

Flowers in the Sanctuary

Supplying the flower arrangements for the worship service is a wonderful way to commemorate a date that is important to you or a loved one. Please check the Flower Chart in the narthex and sign up. The cost is \$70. For more information call the church office at 233-4351.

Special Funds

One way to honor or to remember a loved one is with a memorial or an honorarium to some of our different funds such as the Properties Fund, General Fund, Piano/Organ Fund, Family and Children's Ministries Fund, Youth Ministry Fund, Laura Angell Scholarship Fund, Pet Memorial Fund or one of our Mission Funds.

Newsletter Information

If you have an announcement for "The Asbury Update," please email Chris Kincade at ckincade@asburymemorial.org.

Mission Statement

Asbury Memorial is a place where all people can develop their spirituality, use their talents, and grow in faith as we seek to love, serve, and celebrate God, each other, and our community.